

EasyScan

Flush-mounted QR code and RFID reader

COMINFO turnstiles can be optionally equipped with a flush-mounted EasyScan QR code and RFID reader. It is available in three model versions; EasyScan, EasyScan RFID, and EasyScan mini.

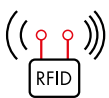
The standard version, the EasyScan, allows verification of credentials via 1D and 2D (QR) codes, while the advanced EasyScan RFID also supports RFID technology. The EasyScan mini offers the perfect solution for integration into turnstiles when space is limited and without compromising on performance.

Benefits

- Supports all major 1D and 2D (QR) codes
- EasyScan RFID supports both high (13.56 MHz) and low (125 kHz) frequencies
- Flush-mounting into standard-sized turnstile cabinets
- Superior scanning from any smartphone screen
- LED and acoustic signalization that informs about the status of entry events (excluding the EasyScan mini)



1D and 2D
(QR) codes



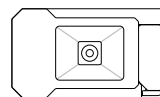
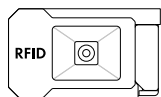
13.56 MHz
125 kHz



Visual & acoustic
feedback



Mobile
reading



Technical specifications

	EasyScan RFID	EasyScan	EasyScan mini
Dimensions	118 × 69 × 46 mm		61.5 × 65.5 × 31.9 mm
Operating environment	-25 °C to 60 °C 5% to 95% non-condensing		-40 °C to 60 °C 5% to 95% non-condensing
Power supply	5-13.8 VDC		3.3-5 VDC
Input power	1.2 W normal (2.5 W max. peak)		1.1 W normal (1.13 W max. peak)
Communication interface	RS-232, RS-485, Wiegand, USB HID Keyboard (Barcode ASCII)		RS-232, USB
Signalling	White, green, red LED + acoustics		-

Barcode scanner

Optical resolution	640 × 480 CMOS
Supported barcodes	All major 1D and 2D (QR) codes
Illumination	Yes

RFID reader

13.56 MHz	ISO14443A (Mifare) CSN - Mifare DESFire - Mifare Ultralight, Classic ISO15693 CSN	-	-
125 kHz	EM4xxx, HID prox	-	-

